

ARISUGAWA ORTHOPAEDIC CLINIC

Orthopedic problems ?

That is disorders of the moving parts of the body

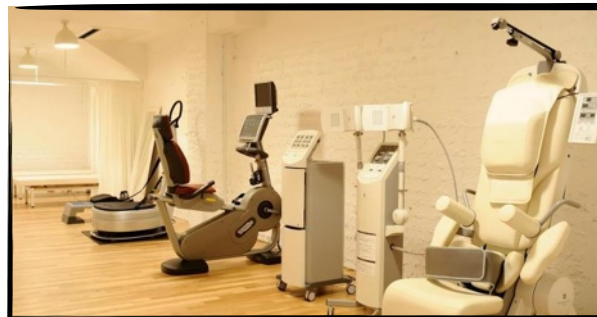
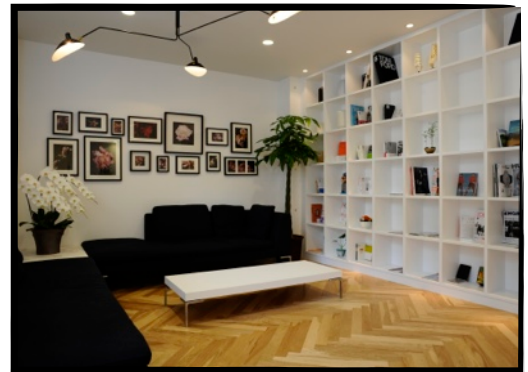
- Back,neck ,shoulder pain
- Knee pains
- Sports injury
- Sciatica and disc problems
- Osteoporosis etc

and we treat by non-surgical methods including

- Medication
- Manipulation
- Cortisone (steroid) injections
- Rehabilitation
- Acupuncture
- Aromatherapy

Examination

- X-ray
- DEXA
- Laboratory etc



CLINIC HOURS
Mon Tue Wed Fri
9:30~13:30 15:00~19:00
Sat
9:30~17:00

5-13-6 MinamiAzabu,Minato-ku,Tokyo

TEL:(03)5475-1070

<http://arisugawa-seikeigeka.com>